

Newsletter

Early May
Bank Holiday

What's In This Issue?

Notice Board

House News

Psychology & Sociology.

STEM

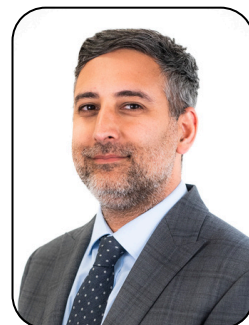
Sports

Careers

Dear Parents, Carers and Students,

This week marks an important milestone for our Year 13 students, as it has been their final week of normal timetabled lessons. From next week, they will move into study leave and begin the final stage of their post-16 education.

We are incredibly proud of the engagement, effort and preparation they have shown throughout the year. Their commitment and maturity have been evident, and they have approached this period with real focus and determination. We wish them every success as they prepare for their final examinations and take these next steps towards their future pathways.



MR FERNANDES



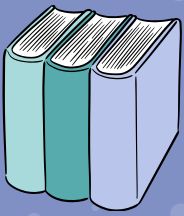
We hope all our families enjoy the long weekend. School opens again on Tuesday 5 May.

Warm regards,

Mr J Fernandes

Deputy Headteacher & Head of Sixth Form

A NOTE FROM MR FERNANDES



NOTICE BOARD



BFS_Bristol



BFS_Enrichment



NEXT WEEK AT BFS

Monday 4 May

Early May Bank Holiday - School closed to all students

Tuesday 5 May

Y8 End of Year Exams (until Friday 15 May)

Y11 Summer Exams (until Wednesday 17 June)

Y12 Oxford University Trip (25 students)

Y13 Summer Exams (until Friday 19 June)

Wednesday 6 May

Y12 BTEC Business Exams (until Friday 8 May)

Thursday 7 May

Y7 Young Green Briton Dragons Den, 3pm in DG01

Y10 Silver DofE Practice Expedition (return Saturday 9 May)

Friday 8 May

House Fridays: Rubik's Cube Challenge, lunchtime

QUICK LINKS



Lunch Menu

Extra-Curricular Clubs

Term Dates

Key Dates

Student/Parent Handbook

Past Newsletters

WE'RE HIRING

Headteacher

Administration Manager

Apply Now

PERIOD PRODUCTS

Free period products are available to those who need them. Just look for the **Pink Boxes** in the following locations:

- Student Services
- Sixth Form Admin Office
- PE Changing Rooms
- Mrs Gardiner's Room
- Behaviour Office
- Main Reception
- SEND Office
- Mental Health & Safeguarding Room
- Head of Year Offices
- Behaviour Room



YEAR 10 RP SHORT COURSE

On Wednesday 20 May (afternoon), all Year 10 students will be taking their external GCSE examination for GCSE Religious Studies (Short Course). Further details of the topics and where to find resources will be sent to students next week.

PUNCTUALITY

Students are expected to arrive at school by 8.25am to be in tutor for 8.30am. Students who arrive late to school will be issued an afterschool detention.

- Students arriving between 8.30am and 9am will have a late code (L) recorded in the register.
- Students arriving after the register closes at 9am will receive the unauthorised late coded (U) in the register. Please note that unauthorised late codes can lead to penalty notice fines or prosecutions being issued by Bristol City Council.

Top tips for students to be on time:

- Get into a regular sleep pattern so it is easier to get up
- Don't have screens on an hour before bed, so it is easier to go to sleep
- Prepare your books, equipment and uniform the night before
- Organise with friends to travel to school together
- If it is bad weather and you are getting a lift, leave earlier. The roads will be busy!

ATTENDANCE



HOUSE NEWS



HOUSE POINTS



Well done to **Canford House** for earning the most House points this week!

Well done Canford!

Top House Point Earners

	Ashton	Blaise	Canford	Durdham
Year 7	William B	Freya B	Daniel C	Oliver P
Year 8	Brooklyn S	Archie B	Sebastian B	Oliver S
Year 9	Nicholas O	Seth M	Greg N	Oliver D
Year 10	All of Year 10 for completing their mock exams			
Year 11	Alexi R, Nilah M	Shenise N	Liza M	Alejo H, Sidney D, Katy S, Elle R, Andrés H
TOP HOUSE POINT EARNERS ACROSS YEAR GROUP				
Year 12	Isla W, Emlyn W			
Year 13	Sophie W, Kamran S, Reuben B			

HOUSE FRIDAYS



HOUSE FRIDAYS



Today we held a 'Witness the Fitness' event where students and staff were challenged to complete the most push ups, highest vertical jump, longest held plank, longest held wall sit and most sit-ups in a minute. Next week we will celebrate the winners.

Rubik's Races

Next week, the race is on to complete a Rubik's cube in the fastest time. Please bring your favourite cube (if you have one), we will have a few for newbies and novices to borrow.

PSYCHOLOGY SOCIOLOGY



MEET THE DEPARTMENT



Ms Tovey

Head of Department

Where did you go to university and what did you study: I went to the University of Birmingham between 2016-2019 and graduated with a BSc (Hons) in psychology. I then went straight into my PGCE at the University of Worcester.

What are your hobbies: I am very active – I enjoy strength training and running, and will be doing the Bristol 10K next weekend. I also love to read – my favourite kind of book is probably a fast-paced thriller. Finally, I love to cook and I write down all the different recipes I make into a book (I'm currently on about 250!).

Who is your favourite psychologist or sociologist and why: Ann Oakley – she's just an icon and says so many things that make sense. She sheds light on things that are often taken for granted.

What's your favourite thing to teach in sociology and why: The selection and presentation of news topic in the media unit - there are so many excellent case studies and I find the debate around whether news is ideologically biased or fairly objective and well-regulated a very important and interesting one.

What's your favourite thing to teach in psychology and why: Perhaps surprisingly, biopsychology – I'm absolutely not into biological psychology on the whole but absolutely love the satisfaction when my students understand tricky things they think they won't get, like synaptic transmission and split-brain research.



Ms Norton

Teacher of psychology and sociology, Deputy Head of Sixth Form and Careers Leader

Where did you go to university and what did you study: I completed my undergraduate degree in Psychology and Sociology (BSc) at the University of Leeds. After this, I took two years out of education before completing my PGCE at Canterbury Christ Church University in Kent. I then moved to London to begin my teaching career at a school in Walthamstow, East London, before returning to the South West, where I have been at BFS ever since.

What are your hobbies: I love getting out for walks with my dog, Max - I'm very lucky to live near some beautiful countryside in Gloucestershire and the Cotswolds. Last summer, I also joined a CrossFit gym, and quickly realised I had no idea what I was letting myself in for! While I'm still far from an expert (and often covered in bruises), I'm definitely fitter and stronger than I was nine months ago. I'm also fortunate to have a large extended family living nearby, so I spend as much time with them as possible.

Who is your favourite psychologist or sociologist and why: I really enjoy the work of Louise Archer, who is a Professor of Sociology of Education at University College London. Her research focuses on educational inequality, particularly in relation to class, gender and ethnicity. We study some of her research as part of the Year 12 Education unit, when we examine reasons for differences in educational achievement. I find her work especially powerful because it aims to inform policy and improve educational practice to better support underachieving groups.

What's your favourite thing to teach in sociology and why: This is like choosing a favourite child! There are so many parts of the sociology course that I enjoy teaching. Alongside the Education unit, I particularly enjoy teaching Crime and Deviance, especially the different sociological explanations for why crime occurs. One theory students often find especially interesting is labelling theory, which argues that crime can be the result of moral panics created by the media. Once individuals are labelled as 'deviant', this label can begin to shape how they see themselves and how others treat them - sometimes leading to further deviance.

What's your favourite thing to teach in psychology and why: In psychology, I really enjoy teaching the Approaches unit in Year 13. This includes classic theories and research by psychologists such as Ivan Pavlov and B.F. Skinner, who studied learning through classical and operant conditioning. This may be an unpopular opinion with some students, but I also enjoy teaching research methods. Psychology is often wrongly seen as an unscientific subject, and I enjoy challenging this misconception - even though it can be one of the most demanding parts of the course.



What We've Been Learning

In sociology, we have been learning about patterns of divorce and marriage in Year 12, analysing various explanations for why divorce rates are now at a staggering 42%. The class consensus was that the most influential factor is legal changes making divorce more accessible due to widening the grounds for divorce, equalising the process for men and women and making it a cheaper process with the introduction of legal aid. With Ms Norton, students have been looking into educational policy across time and the impacts this has had on the education system.

In Year 13, students have been learning the final elements of the specification in preparation for their upcoming exams, such as how media impacts audiences and whether we engage with it passively or critically as well as the role of social policy in society and patterns of offending and how they differ due to variables such as class, gender and ethnicity. We wish the Year 13 students every success in their exams!



Year 12 Sociologists' Reflections

We spoke to some Year 12s as we approach the end of their first academic year of being a sociology student.

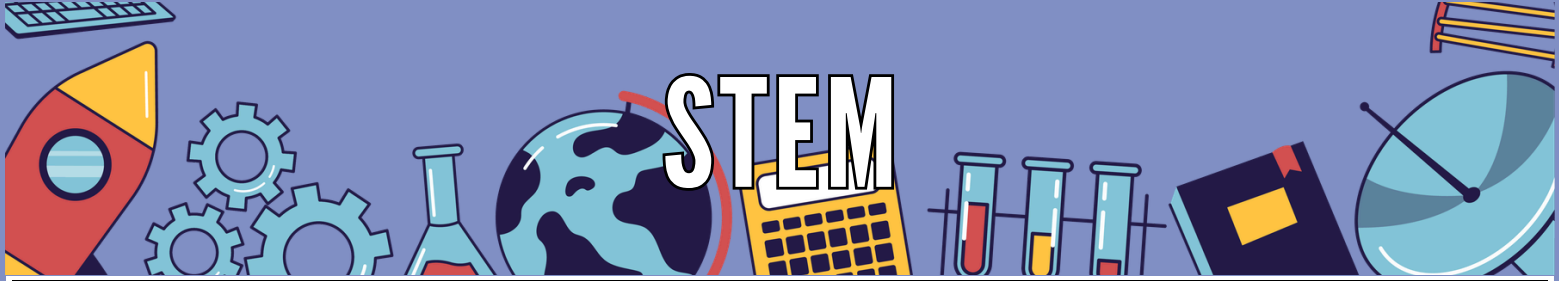


Laura B said sociology "feels like everything I've ever thought about", explaining that it tackles the big questions and brings things to life, such as explaining and contextualising the education system around her. Her favourite thing to learn so far has been the domestic division of labour topic, highlighting trends in how housework is divided and sociological explanations for why women continue to do more housework and childcare.

Ethan S said sociology has been "eye opening" and allows him to understand people and their behaviour more. So far, he has most enjoyed learning about ethnic differences in educational achievement and the various explanations for these patterns including factors affecting students both within and outside schools.



Grace C said she has really enjoyed learning a range of ideologies and finally understanding things she has thought about a lot before. Her favourite things to learn so far have been the theories on the role of the family topic, from functionalist ideas that the family can be likened to a warm bath to the personal life perspective's idea that family is defined differently by everyone and it's perfectly valid to see your dog as part of the family!



STEM

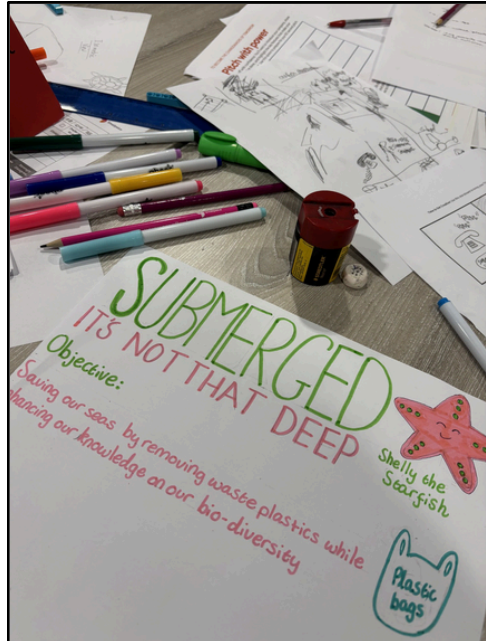
GUH STEM SUBSEA CHALLENGE

On Tuesday six STEMtastic students from Year 9 ventured to the National Composites Centre to compete in the SW regional finals of the Global Underwater Hub STEM Subsea Challenge.



The competition requires teams to design, build, program and market a remotely operated vehicle to collect ocean plastics, conduct research for new aquatic life, and repair vital sea floor cables. Time was tight and every member of the team had to pull together to complete their challenges. Leo did an ace job at programming, ably assisted by Greg. Henry created one of the most inspired storyboards to sell their product in a TV advert, Josh and Ollie were excellent engineers and Rebecca was a marvel at marketing, creating the team brand and mascot.

YEAR 9



After presenting to esteemed industry judges in a confident and well-prepared pitch (including a harmonica intro from Greg), our team were announced as runners up and only one point behind the winners. It was a sterling effort in a highly competitive field and we are so proud of them!

BFS SPORTS

 BFS_TeamPE



MRS BALLARD

SPORTS CLUBS TIMETABLES

MONDAY	TUESDAY	WEDNESDAY	THURSDAY	FRIDAY
	Year 8 Rounders	Year 7 Rounders	All Years Athletics	
	Year 9 Rounders	Year 8-9 Dance	All Years Tennis	
	Year 10 Rounders	All Years Cricket		

CRICKET

Three Year 8 boys played in the U13s Gloucester Youth Cricket League Hundred Final for Stoke Bishop Cricket Club. The team managed to win the final with some excellent performances. Well done to the entire team, and our BFS students - Fraser B, Jamie D and Max A.



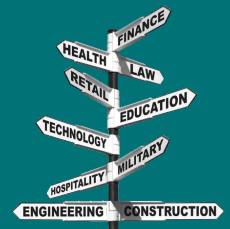
UPCOMING FIXTURES

Tuesday 5 May	English Schools Athletics	Yate
Wednesday 6 May	Y9&10 Cricket vs St Bernadette Catholic Secondary School	Westbury Fields, St Monica's
Thursday 7 May	English Schools Athletics	Yate
Friday 8 May	Girls Dynamos Cricket Festival	Bedminster Cricket Club
Wednesday 13 May	Y7-10 Rounders vs Oasis Academy Brightstowe	Oasis Academy Brightstowe
Wednesday 13 May	Y7&8 Cricket vs Oasis Academy Brislington	Westbury Fields, St Monica's
Tuesday 19 May	Y7&8 Athletics	Kellaway Avenue
Wednesday 20 May	Y7-10 Rounders vs Blaise High School	Blaise High School
Thursday 21 May	Y7-10 Rounders vs St Bede's Catholic College	St Bede's Catholic College



MRS SMITH

CAREERS



CAREERS IN THE NHS: BIOMEDICAL SCIENCE

This week we welcomed Hayley Rumbelow, training officer within the Blood Science team at Southmead Hospital. Hayley explained that the NHS is one of the UK's largest employers, offering over 350 different roles. While doctors and nurses are essential, they make up only around 30% of the workforce. Behind the scenes are roles in healthcare science, pathology, social care, IT, estates, administration, and education – all working together to support patient care. If you are unsure which role might suit you, the NHS Careers website, [Health Careers](#), is an excellent starting point where you can discover a wide range of NHS roles, understand what qualifications and training are needed, explore apprenticeship opportunities and see how careers can progress over time. It is a valuable resource for researching pathways and planning next steps.

Routes into the NHS

Apprenticeships are currently one of the main routes into the NHS, allowing you to earn while you learn and gain real-world experience. The NHS actively supports career progression, meaning once you are in, there are many opportunities to train, specialise, or move into different roles over time.

Training Officer in Blood Sciences

Hayley explained that her role as a Training Officer in Blood Sciences supports and oversees training within pathology laboratories. This includes supporting placement students, apprentices, and trainees, co-ordinating training programmes and ensuring staff competence and development. Hayley heard about this career after attending a careers event and hearing a Biomedical Scientist speak. Hayley really enjoyed sciences and wanted to pursue a career within the field but knew that she did not want to be patient-facing.

What Do Biomedical Scientists Do?

Biomedical Scientists play a crucial role in diagnosing and monitoring disease by analysing patient samples in laboratories. This role is ideal if you enjoy science, prefer practical, hands-on work, and would rather not work directly with patients. Pathology departments are large and busy, with over 1,000 staff members supporting patient care behind the scenes.

Biomedical Scientists can work across a range of specialisms, including Microbiology, Virology, Genetics, Biochemistry, Immunology, Haematology & Blood Transfusion, Histology and Cytology. Some areas are easier to move between early on, but as you specialise, it can be harder to switch – making early research important. No two days are the same in a pathology lab. Biomedical Scientists must ensure machinery is functioning correctly, fix faults where possible, process a constant flow of samples, prioritise urgent requests, especially from A&E. Typical target turnaround times are around one hour for A&E tests, around 4 hours for in-patient and clinic tests, and within 24 hours for all tests. Accuracy and efficiency are critical.

Training, Qualifications & Accreditation

To work as a Biomedical Scientist, you must have a relevant degree or apprenticeship, gain laboratory experience, and ensure your training provider is HCPC and IBMS accredited (always check accreditation carefully before applying – without it, you cannot register as a Biomedical Scientist). Some laboratory work experience opportunities exist, but all experience is valuable if you explain it well. For example: Using bleach shows understanding of chemicals and safety, following procedures shows attention to detail, teamwork and responsibility are essential lab skills. The key is clearly linking your experience to the role you are applying for. Final advice: research NHS roles early, use the NHS Careers website, attend careers events and talks, check course accreditation and do not overlook apprenticeships. There are many routes into the NHS – and far more careers than most people realise.

We once again thank Hayley for an inspiring and informative talk about the different roles available with the NHS and more specifically about roles within Biomedical Sciences.

EMPLOYERS TALKS

COMING UP...

8 May: Construction
15 May: Rail Engineering
22 May: Veterinary Research

5 June: Pharmacy
12 June: Prison & Probation Service
19 June: National Grid